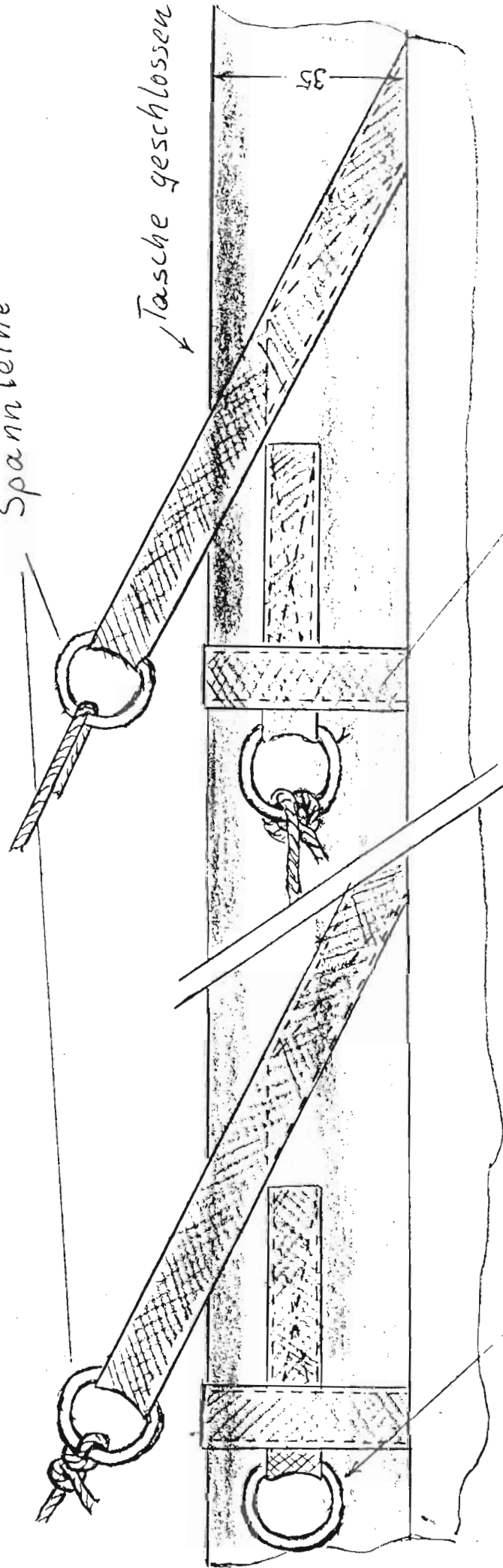


Werner Ahlgrin

Reloplan 4/280

Spannteine

Tasche geschlossen



Waage

M 1:1

Waage

oberes Segel

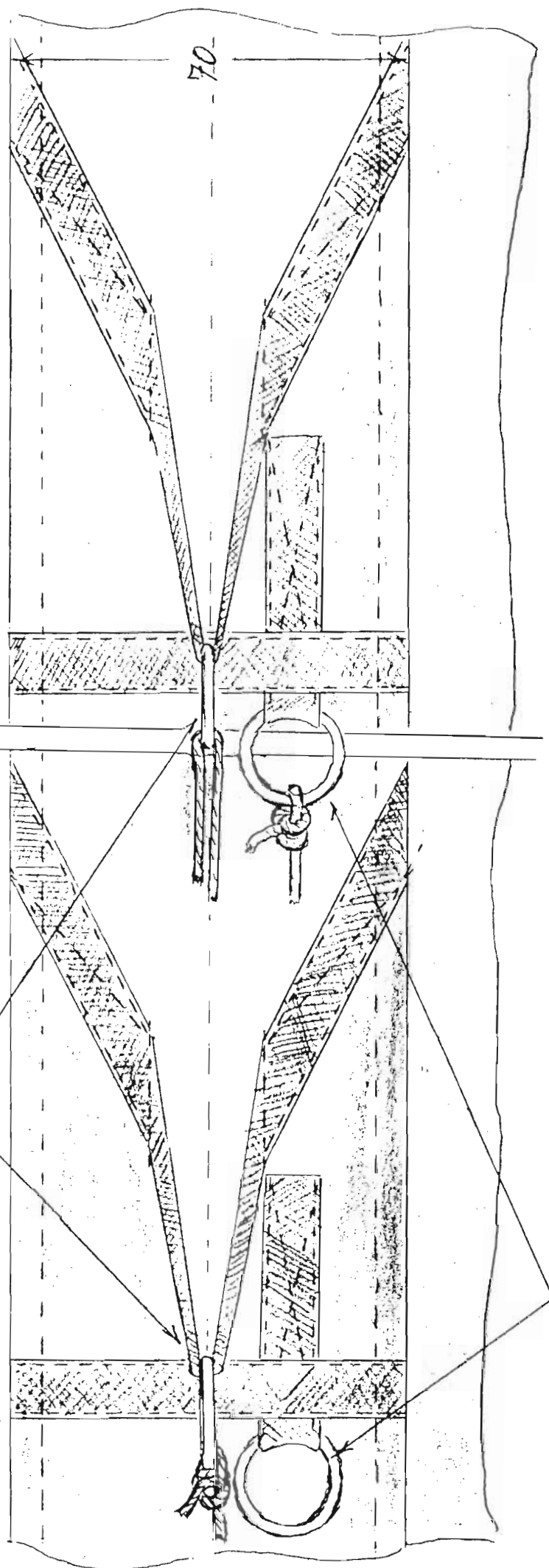
Werner Ahlgrim

Roloplan 4/280

Tasche offen

Spannleine

70



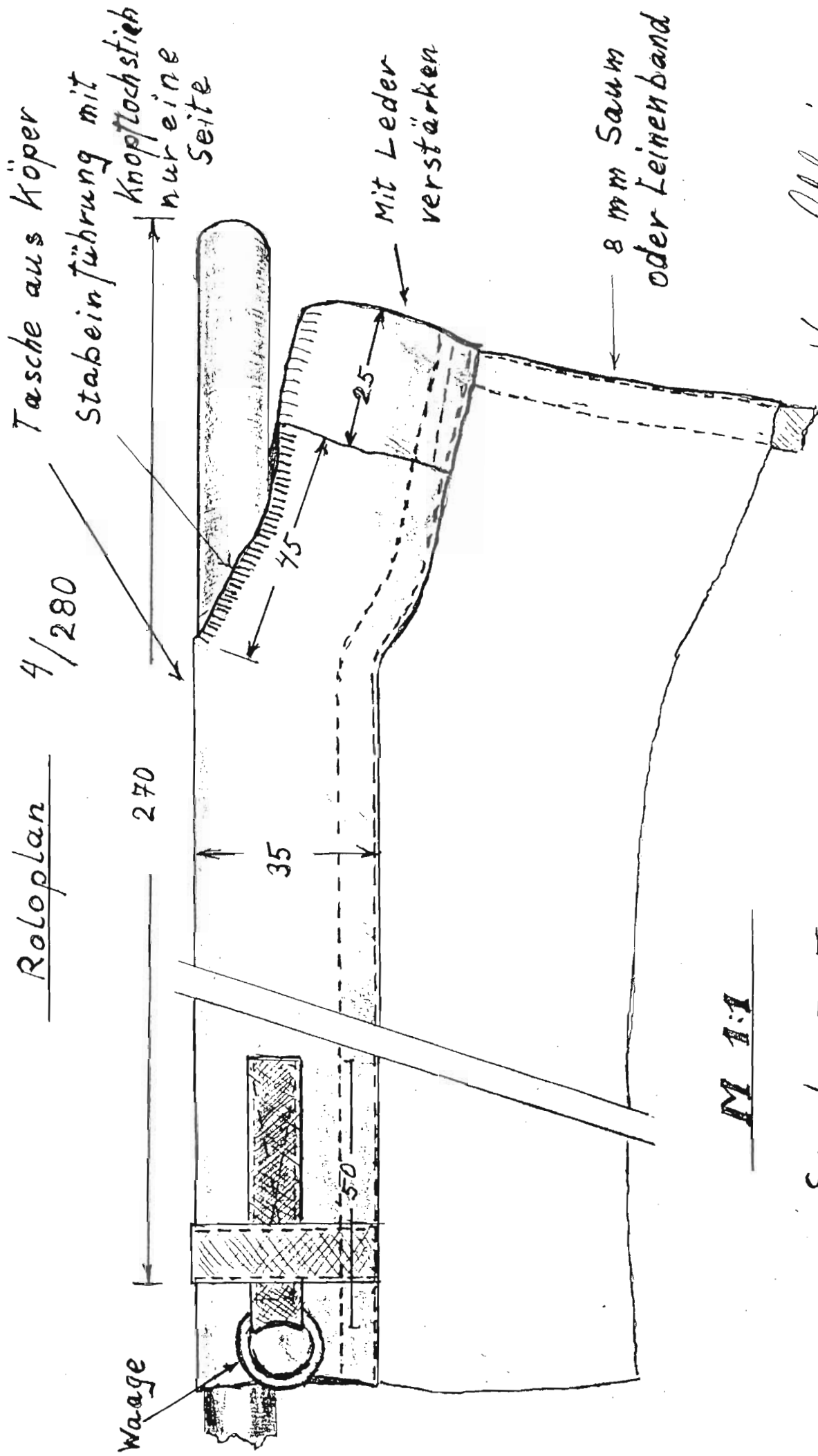
Waage

MI:1 oberes Segel

Herner Abt. 1941

Roloplan

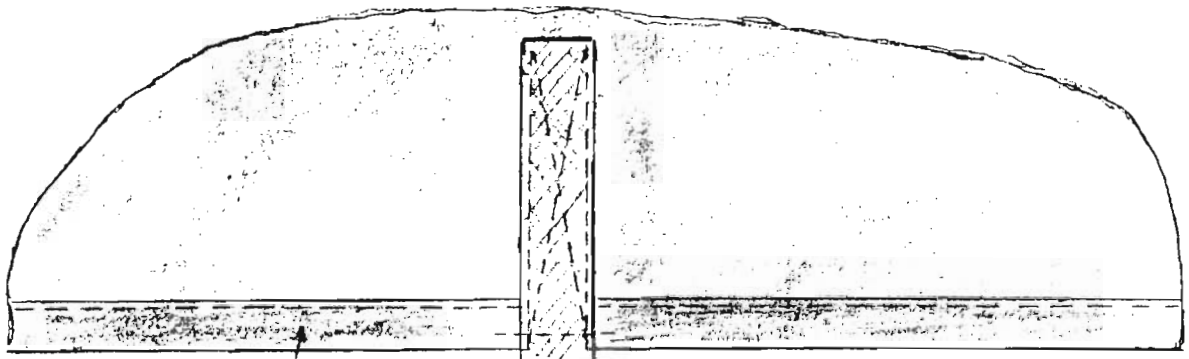
4/280



M 1:1

Segel II III

Herrn Lehmann



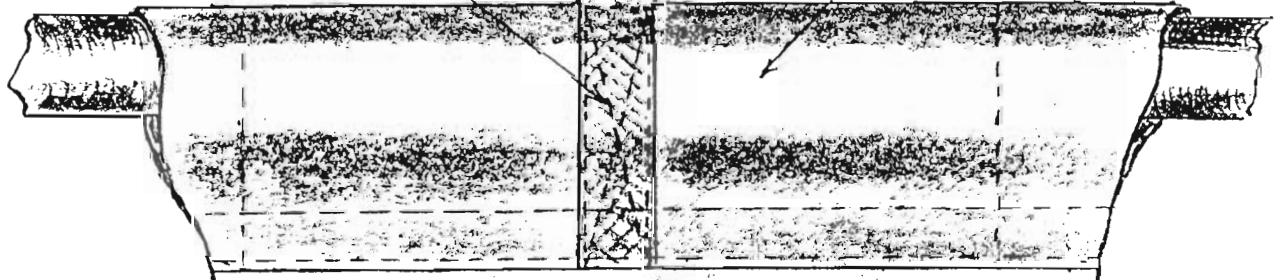
Webkante
einmal umlegen

10 mm Saum
oder Leinenband

M 1:1

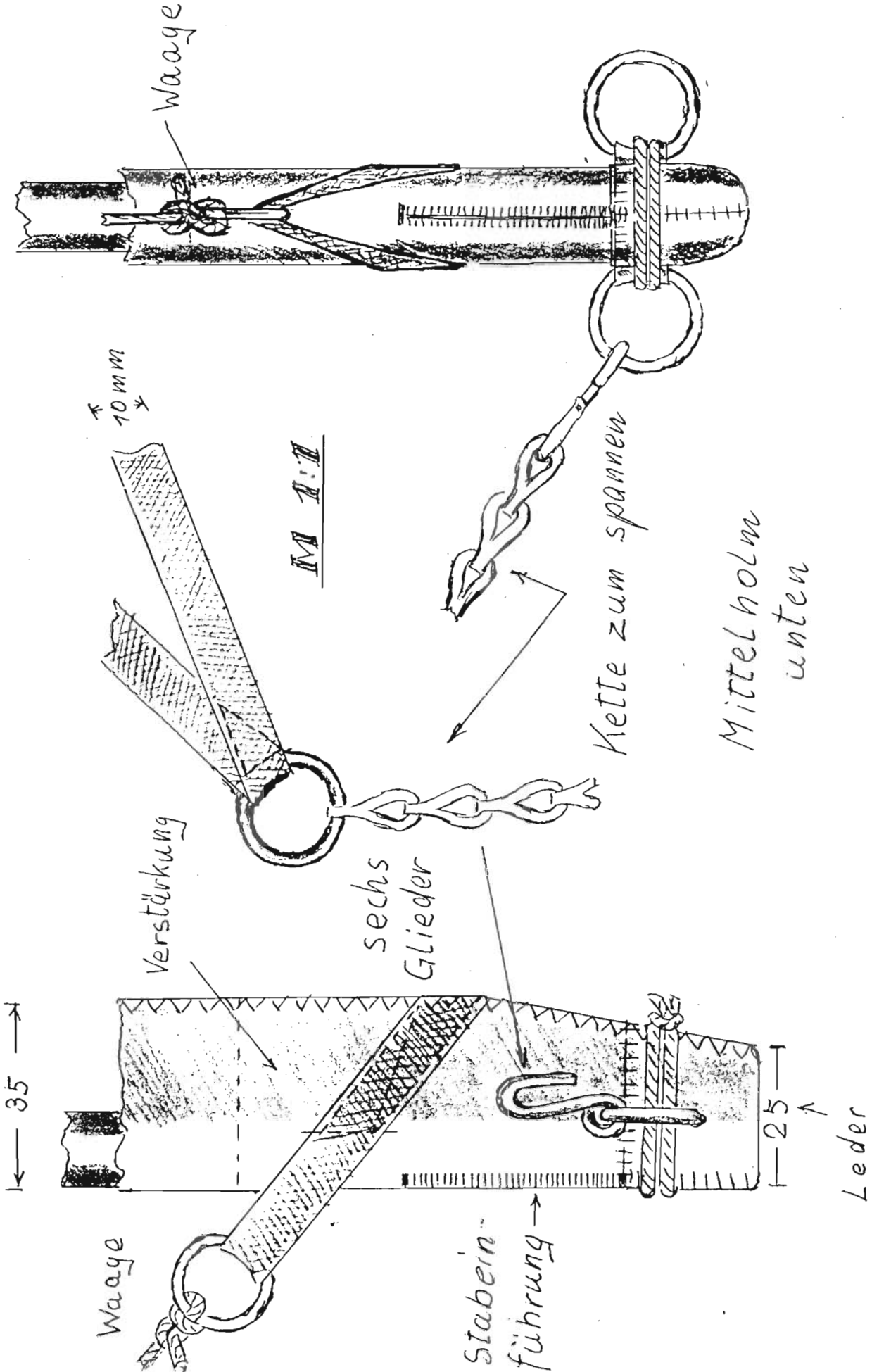
Erst Bänder
annähen, dann Tasche
schliessen

Verstärkung
unter legen



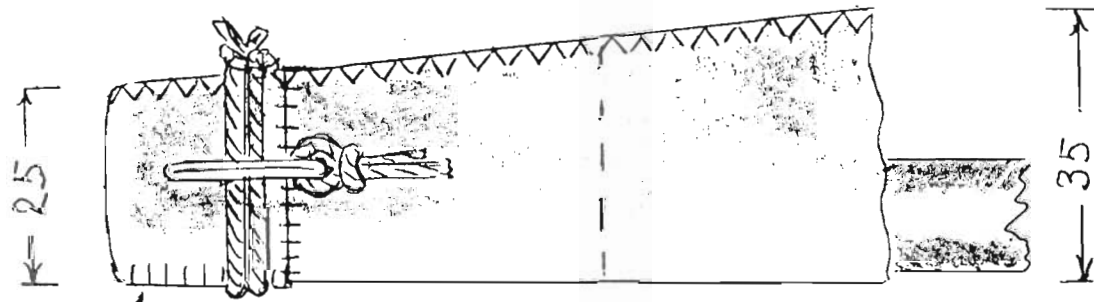
Rückseite

Roloplan 4/280 Wexner Ahlgrin



Werner Ahlgrin

Roloplan 4', 280



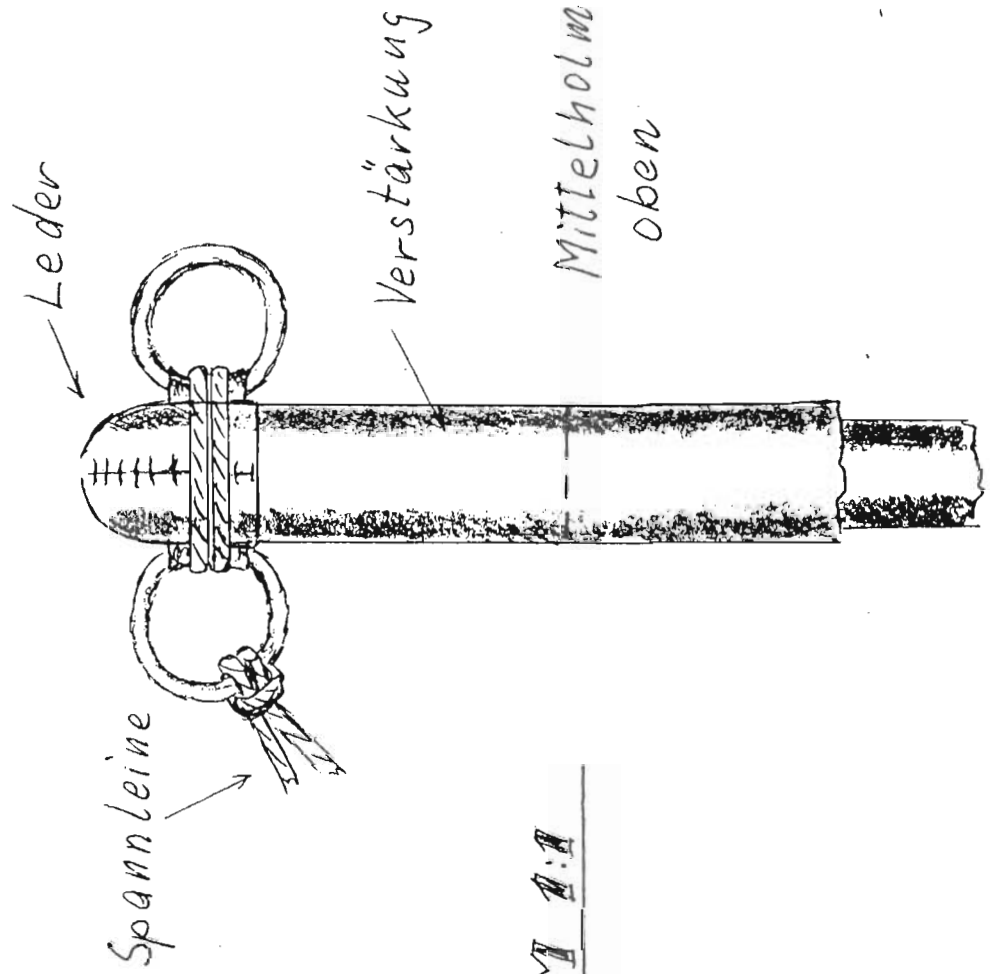
Leder

Verstärkung

25

35

M 1:1



Leder

Verstärkung

Mittelholm
oben

Spannleine

Roloplan

4/280

Werner Ahlgren